

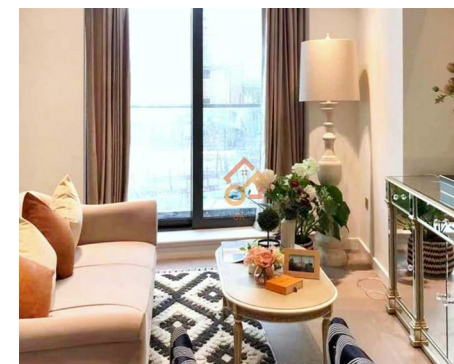
Let **UK** Home

2 Bedrooms

Flat

Located in London

£4,500 Per Month



info@letukhome.co.uk

<https://www.letukhome.co.uk/>

01795 358 886



1 Newcastle Place London

W2 1DB



Let UK Home are excited to offer this 2-bedroom, 2-bathroom apartment in Westmark Tower, part of West End Gate development.

This property comprises a large bright open plan kitchen and living room leading to a large private balcony with great views, two double bedrooms(master with ensuite), a large family sized bathroom and ample storage.

The development includes a concierge, gym, swimming pool, private cinema, business meeting area, and a full range of facilities, making your stay more comfortable and secure.

The surrounding transportation is convenient, within walking distance to Edgware Road Station, and close to both Marylebone Train Station and the interchange hub Paddington Station. The Crossrail 1 Queen's Line will also pass through here, allowing easy access to various areas of London.

The development is in a prime location with abundant educational resources nearby, making it very convenient to reach higher education institutions such as UCL, LSE, RAM, and IC.

The area around the development is surrounded by numerous attractions, including the Sherlock Holmes Museum, Wallace Collection, Madame Tussauds, and Little Venice, which was also popularized by Jay Chou, all within walking distance. It is also very convenient to get to slightly farther landmarks such as Big Ben, Westminster Abbey, and Buckingham Palace. In addition, the area boasts many cozy and impressive cafes, bars, and galleries.

1 Newcastle Place London

£4,500 Per Month

- 1st Floor
- 24h Security
- The Gym
- Business Lounge

- Concierge Service
- Swimming Pool
- Cinema & Game Room





Let **UK** Home

3F 2 Eastbourne Terrace
Paddington
London
W2 6LG

01795 358 886

info@letukhome.co.uk

2 bedrooms
First Floor

Type H

DIMS	M	FEET
LIVING ROOM	9'6"	X 16'3"
KITCHEN	6'10"	X 14'9"
BEDROOM 1	9'3"	X 10'5"
BEDROOM 2	11'5"	X 11'1"



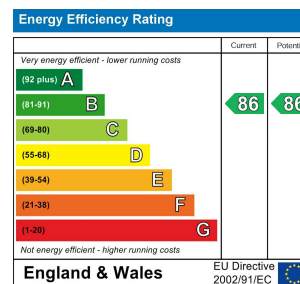
Total floor area

75 square metres

Council Tax Band: F

Local Authority:

Agents Note: Whilst every care has been taken to prepare these particulars, they are for guidance purposes only. All measurements are approximate and are for general guidance purposes only and whilst every care has been taken to ensure their accuracy, they should not be relied upon and potential buyers/tenants are advised to recheck the measurements.



<https://www.letukhome.co.uk/>